

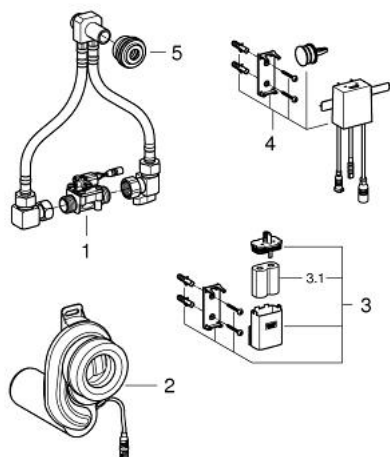
## 39 367 000 TEMPERATURE SENSOR FOR URINAL



### PRODUKTA APRAKSTS

- 6 V lithium battery, type CR-P2
- with water connection set and stop valve
- siphon with temperature sensor
- cartridge with solenoid valve and dirt strainer
- flow pressure min 0.5 bar
- operating pressure max 10 bar
- 7 pre-set programs:
  - auto flush
  - cleaning mode
  - pre-flush on/off
- CE approved
- only for certain urinal ceramics, check online TPI

## 39 367 000 TEMPERATURE SENSOR FOR URINAL



### REZERVES DAĻAS, aprīlis 2015 – tagad

- 1: Solenoid valve (Rezerves daļas Nr. 42476000)
- 2: Waste trap (Rezerves daļas Nr. 42477000)
- 3: Battery housing (Rezerves daļas Nr. 42393000)
- 3.1: Battery (Rezerves daļas Nr. 42886000)
- 4: Electronic (Rezerves daļas Nr. 42478000)
- 5: Lip seal (Rezerves daļas Nr. 4387500M)