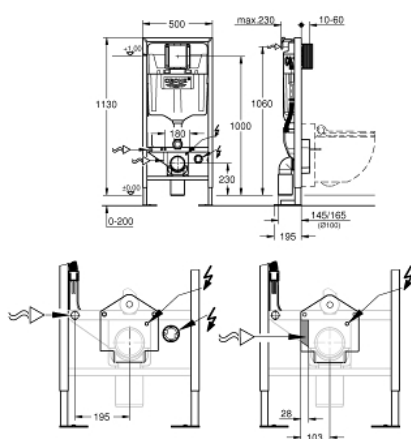


## 39 128 001 RAPID SL ELEMENT FOR GROHE SENSIA SHOWER WCS, 1.13 M INSTALLATION HEIGHT

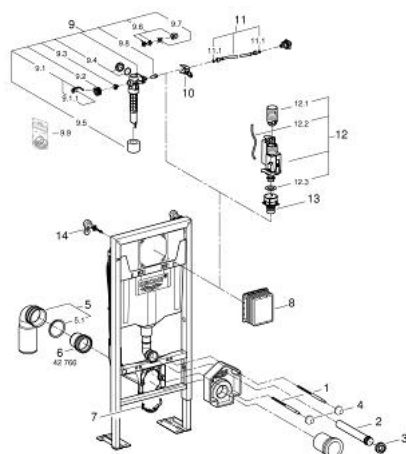


### PRODUKTA APRAKSTS

- with flushing cistern GD 2, 6 - 9 l
- PVC outlet bend Ø 90 mm
- flushing cistern GD 2, 6 - 9 l, containing following features:
- including wall brackets 38 558 00M for on-the-wall installation
- concealed socket for mains supply
- for mounting of small flush plates please order revision shaft 40 911 000 (sold separately)



## 39 128 001 **RAPID SL ELEMENT FOR GROHE SENSIA SHOWER WCS, 1.13 M INSTALLATION HEIGHT**



### REZERVES DAĻAS, septembris 2015 – tagad

- 1: Threaded bolt (Rezerves daļas Nr. 4276400M)
- 2: Wall union (Rezerves daļas Nr. 43352000)
- 3: Connector (Rezerves daļas Nr. 37119000)
- 4: Basin fastening (Rezerves daļas Nr. 43511000)
- 5: PVC waste bend (Rezerves daļas Nr. 42216000)
- 5.1: Sealing washer (Rezerves daļas Nr. 4207700M)
- 6: Distance pipe 3" (Rezerves daļas Nr. 42766000)
- 7: Support for outlet bend (Rezerves daļas Nr. 42243000)
- 8: Inspection shaft (Rezerves daļas Nr. 66791000)
- 9: Filling valve (Rezerves daļas Nr. 37095000)
- 9.1: Lever (Rezerves daļas Nr. 43734000)
- 9.1.1: Seal (Rezerves daļas Nr. 4377000M)
- 9.2: Valve head (Rezerves daļas Nr. 43536000)
- 9.3: Membrane (Rezerves daļas Nr. 4375800M)
- 9.4: Screw cap (Rezerves daļas Nr. 43735000)
- 9.5: Valve float, 5 pcs. (Rezerves daļas Nr. 4379100M)
- 9.6: Set of seals (Rezerves daļas Nr. 43722000)\*
- 10: Support device (Rezerves daļas Nr. 42246000)
- 11: Tube (Rezerves daļas Nr. 42233000)
- 11.1: Sealing washer (Rezerves daļas Nr. 0319100M)
- 12: Dual Flush discharge valve AV1 (Rezerves daļas Nr. 42320000)
- 12.1: Extension for overflow pipe (Rezerves daļas Nr. 42313000)
- 12.2: Pneumatic hose (Rezerves daļas Nr. 42319000)
- 12.3: Seal (Rezerves daļas Nr. 42310000)
- 13: Valve seat for GD2 (Rezerves daļas Nr. 42315000)
- 14: Wall brackets (Rezerves daļas Nr. 3855800M)

\* Izvēles aksesuāri