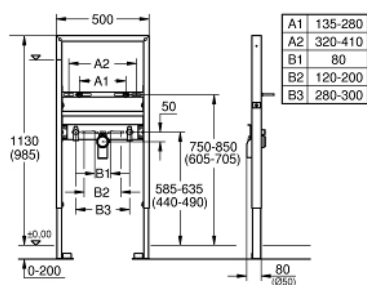
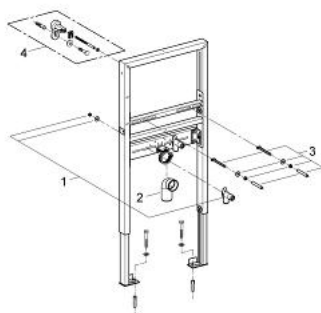


A blue metal frame with a horizontal bar and a central component, likely a test fixture or assembly. The frame is made of blue-painted metal. A horizontal bar is mounted across the middle. On this bar, there are two brass-colored fittings and a central green and red component. The frame has vertical supports on both sides, with some adjustment mechanisms visible.

- with noise protection
- 1.13 m installation height
- for on-the-wall installations or studded walls
- powder coated steel frame, self-supporting
- for dry-cladding, completely pre-assembled
- with fixed connections
- quick adjustment, lockable
- fixing material
- TÜV approved
- fixing and connecting traverse, height adjustable
- wash basin fixing bolts M10 with fixing device for ceramic
- variable distance of fixing bolts
- HT-outlet bend Ø 50 mm
- seal Ø 32 mm
- 2 noise protected fitting connections ½"
- for on-the-wall installation please order wall brackets 38 558 00M (sold separately)



39 052 000 **RAPID SL ELEMENT FOR WASH BASIN, SINGLE HOLE INSTALLATION, HEIGHT ADJUSTABLE**



REZERVES DAĻAS, oktobris 2012 – tagad

1: Fitting connection (Rezerves daļas Nr. 42944000)

2: Outlet elbow 2" (Rezerves daļas Nr. 42943000)

3: Threaded bolt (Rezerves daļas Nr. 42247000)

4: Wall brackets (Rezerves daļas Nr. 3855800M)*

* Izvēles aksesuāri