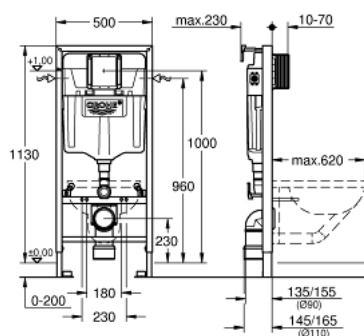


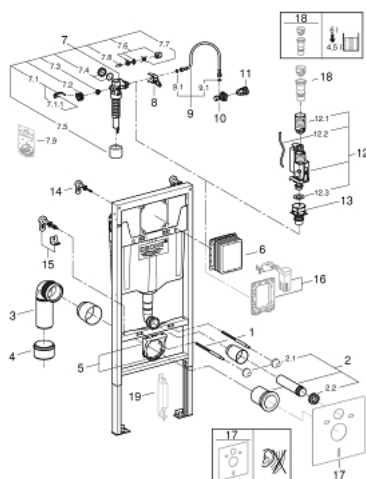
38 624 001 **RAPID SL ELEMENT FOR WC, 1.13 M INSTALLATION HEIGHT**



PRODUKTA APRAKSTS

- with flushing cistern GD 2, 6 - 9 l
- for on-the-wall installations or studed walls
- powder coated steel frame, self-supporting
- for dry-cladding, completely pre-assembled
- with fixed connections
- quick adjustment, lockable
- fixing material
- TÜV approved
- 2 WC fixing bolts
- fixing device for ceramic
- WC ceramics with small bearing area (< 205 mm) require additional accessory 38 779 000
- distance of fixing bolts 180/230 mm
- outlet bend Ø 90 mm
- depth adjustable
- reducer Ø 90/110 mm
- inlet and outlet connecting set
- flushing cistern GD 2, 6 - 9 l, containing following features:
 - adjustment ex factory 6 l and 3 l
 - pneumatic discharge valve offering 3 modes of operation: dual flush or start/stop or single flush
- water supply from left/right or back
- low noise (group I acc. to German Noise Specification)
- insulated against condensation
- angle valve ½"
- water inlet with pipe fixation
- no tools required for the installation of the inspection shaft incl. protection during construction phase
- for vertical or horizontal use
- including wall brackets 38 558 00M for on-the-wall installation
- for mounting of small flush plates please order revision shaft 40 911 000 (sold separately)
- including adapter 38 338 000

38 624 001 **RAPID SL ELEMENT FOR WC, 1.13 M INSTALLATION HEIGHT**



REZERVES DAĻAS, aprīlis 2013 – tagad

- 1: Threaded bolt (Rezerves daļas Nr. 4276400M)
- 2: WC inlet and outlet connecting set (Rezerves daļas Nr. 37311K00)
- 2.1: Basin fastening (Rezerves daļas Nr. 43511SH0)
- 2.2: Connector (Rezerves daļas Nr. 37119000)
- 3: PP-outlet bend Ø 90 mm (Rezerves daļas Nr. 42327000)
- 4: Reducer (Rezerves daļas Nr. 42242000)
- 5: Support for outlet bend (Rezerves daļas Nr. 42243000)
- 6: Inspection shaft (Rezerves daļas Nr. 66791000)
- 7: Filling valve (Rezerves daļas Nr. 37095000)
- 7.1: Lever (Rezerves daļas Nr. 43734000)
- 7.1.1: Seal (Rezerves daļas Nr. 4377000M)
- 7.2: Valve head (Rezerves daļas Nr. 43536000)
- 7.3: Membrane (Rezerves daļas Nr. 4375800M)
- 7.4: Screw cap (Rezerves daļas Nr. 43735000)
- 7.5: Valve float, 5 pcs. (Rezerves daļas Nr. 4379100M)
- 7.6: Set of seals (Rezerves daļas Nr. 43722000)*
- 8: Support device (Rezerves daļas Nr. 42246000)
- 9: Tube (Rezerves daļas Nr. 42397000)
- 9.1: Sealing washer (Rezerves daļas Nr. 0319100M)
- 10: Angle valve (Rezerves daļas Nr. 42396000)
- 11: Connecting box (Rezerves daļas Nr. 38338000)
- 12: Dual Flush discharge valve AV1 (Rezerves daļas Nr. 42320000)
- 12.1: Extension for overflow pipe (Rezerves daļas Nr. 42313000)
- 12.2: Pneumatic hose (Rezerves daļas Nr. 42319000)
- 12.3: Seal (Rezerves daļas Nr. 42310000)
- 13: Valve seat for GD2 (Rezerves daļas Nr. 42315000)
- 14: Wall brackets (Rezerves daļas Nr. 3855800M)
- 15: Xtra wall brackets, flexible placing (Rezerves daļas Nr. 38733000)
- 16: Retro-fit set (Rezerves daļas Nr. 38796000)*
- 17: Set for noise protection (Rezerves daļas Nr. 37131000)*
- 18: 4.5 l adapter for GD2 (Rezerves daļas Nr. 42333000)*
- 19: Accessory (Rezerves daļas Nr. 38779000)*

* Izvēles aksesuāri