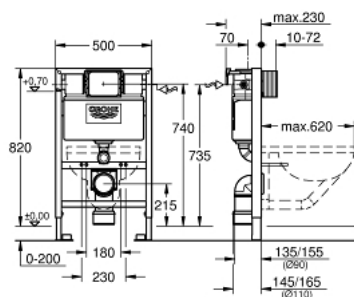


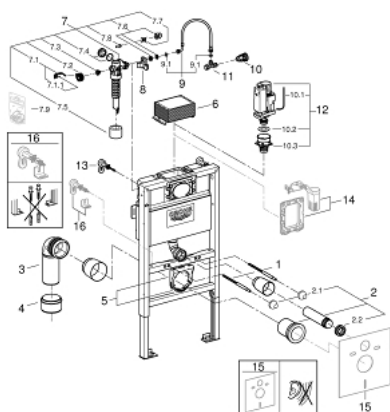
## 38 618 000 **RAPID SL ELEMENT FOR WC, 0.82 M INSTALLATION HEIGHT**



### PRODUKTA APRAKSTS

- with flushing cistern 6 - 9 l
- for on-the-wall installations or studded walls
- powder coated steel frame, self-supporting
- for dry-cladding, completely pre-assembled
- with fixed connections
- quick adjustment, lockable
- fixing material
- TÜV approved
- 2 WC fixing bolts
- fixing device for ceramic
- distance of fixing bolts 180/230 mm
- outlet bend Ø 90 mm
- depth adjustable
- reducer Ø 90/110 mm
- inlet and outlet connecting set
- flushing cistern 6 - 9 l containing the following features:
  - pneumatic discharge valve offering 3 modes of operation: dual flush or start/stop or single flush
  - front or top actuation
- water supply from left/right or back
- low noise (group I acc. to German Noise Specification)
- insulated against condensation
- angle valve ½"
- water inlet with pipe fixation
- shortable inspection shaft incl. protection during construction phase
- including wall brackets 38 558 00M for on-the-wall installation
- for mounting of small flush plates please order revision shaft 40 950 000 (sold separately)
- including adapter 38 338 000

## 38 618 000 **RAPID SL ELEMENT FOR WC, 0.82 M INSTALLATION HEIGHT**



### **REZERVES DAĻAS**, marts 2018 – tagad

- 1: Threaded bolt (Rezerves daļas Nr. 4276400M)
  - 2: WC inlet and outlet connecting set (Rezerves daļas Nr. 37311K00)
  - 2.1: Basin fastening (Rezerves daļas Nr. 43511SH0)
  - 2.2: Connector (Rezerves daļas Nr. 37119000)
  - 3: PP-outlet bend Ø 90 mm (Rezerves daļas Nr. 42327000)
  - 4: Reducer (Rezerves daļas Nr. 42242000)
  - 5: Support for outlet bend (Rezerves daļas Nr. 42243000)
  - 6: Inspection shaft for flushing cistern (Rezerves daļas Nr. 42326000)
  - 7: Filling valve (Rezerves daļas Nr. 37095000)
  - 7.1: Lever (Rezerves daļas Nr. 43734000)
  - 7.1.1: Seal (Rezerves daļas Nr. 4377000M)
  - 7.2: Valve head (Rezerves daļas Nr. 43536000)
  - 7.3: Membrane (Rezerves daļas Nr. 4375800M)
  - 7.4: Screw cap (Rezerves daļas Nr. 43735000)
  - 7.5: Valve float, 5 pcs. (Rezerves daļas Nr. 4379100M)
  - 7.6: Set of seals (Rezerves daļas Nr. 43722000)\*
  - 8: Support device (Rezerves daļas Nr. 42195000)
  - 9: Overflow Sleeve (Rezerves daļas Nr. 43325000)
  - 9.1: Sealing washer (Rezerves daļas Nr. 0319100M)
  - 10: Connecting box (Rezerves daļas Nr. 38338000)
  - 11: Angle valve (Rezerves daļas Nr. 43821000)
  - 12: Discharge valve AV1 complete (Rezerves daļas Nr. 42314000)
  - 12.1: Pneumatic hose (Rezerves daļas Nr. 42319000)
  - 12.2: Seal (Rezerves daļas Nr. 42310000)
  - 12.3: Valve seat for GD2 (Rezerves daļas Nr. 42315000)
  - 13: Wall brackets (Rezerves daļas Nr. 3855800M)
  - 14: Retro-fit set (Rezerves daļas Nr. 38796000)\*
  - 15: Set for noise protection (Rezerves daļas Nr. 37131000)\*
  - 16: Xtra wall brackets, flexible placing (Rezerves daļas Nr. 38733000)\*
- \* Izvēles aksesuāri