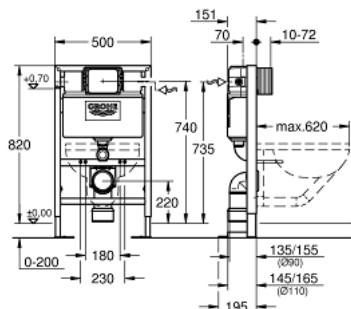


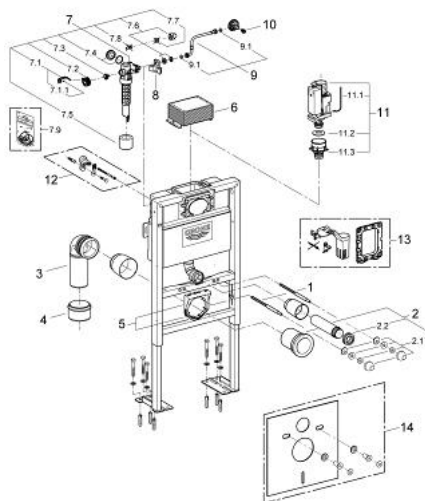
38 587 000 RAPID SL ELEMENT FOR WC, 0.82 M INSTALLATION HEIGHT



PRODUKTA APRAKSTS

- with flushing cistern 6 - 9 l
- for free-standing installation, for on-the-wall installations or studded walls
- powder coated steel frame, self-supporting
- for dry-cladding, completely pre-assembled
- with fixed connections
- lockable
- TÜV approved
- fixing material
- 2 WC fixing bolts
- fixing device for ceramic
- distance of fixing bolts 180/230 mm
- 90° rotatable PVC outlet bend 90 mm
- depth adjustable
- reducer Ø 90/110 mm
- inlet and outlet connecting set
- flushing cistern 6 - 9 l containing the following features:
 - pneumatic discharge valve offering 3 modes of operation: dual flush or start/stop or single flush
 - front or top actuation
 - water supply from left/right or back
 - low noise (group I acc. to German Noise Specification)
 - insulated against condensation
 - 1/2" water supply connection including integrated angle valve and push fit flexible hose union
 - shortable inspection shaft incl. protection during construction phase
 - including wall brackets 38 558 00M for on-the-wall installation
 - for mounting of small flush plates please order revision shaft 40 950 000 (sold separately)

38 587 000 **RAPID SL ELEMENT FOR WC, 0.82 M INSTALLATION HEIGHT**



REZERVES DAĻAS, janvāris 2013 – tagad

- 1: Threaded bolt (Rezerves daļas Nr. 4276400M)
- 2: WC inlet and outlet connecting set (Rezerves daļas Nr. 37311K00)
- 2.1: Basin fastening (Rezerves daļas Nr. 43511SH0)
- 2.2: Connector (Rezerves daļas Nr. 37119000)
- 3: PP-outlet bend Ø 90 mm (Rezerves daļas Nr. 42327000)
- 4: Reducer (Rezerves daļas Nr. 42242000)
- 5: Support for outlet bend (Rezerves daļas Nr. 42243000)
- 6: Inspection shaft for flushing cistern (Rezerves daļas Nr. 42326000)
- 7: Filling valve (Rezerves daļas Nr. 37095000)
- 7.1: Lever (Rezerves daļas Nr. 43734000)
- 7.1.1: Seal (Rezerves daļas Nr. 4377000M)
- 7.2: Valve head (Rezerves daļas Nr. 43536000)
- 7.3: Membrane (Rezerves daļas Nr. 4375800M)
- 7.4: Screw cap (Rezerves daļas Nr. 43735000)
- 7.5: Valve float, 5 pcs. (Rezerves daļas Nr. 4379100M)
- 7.6: Set of seals (Rezerves daļas Nr. 43722000)*
- 8: Support device (Rezerves daļas Nr. 42195000)
- 9: Overflow Sleeve (Rezerves daļas Nr. 43325000)
- 9.1: Sealing washer (Rezerves daļas Nr. 0319100M)
- 10: Headpart (Rezerves daļas Nr. 42385000)
- 11: Discharge valve AV1 complete (Rezerves daļas Nr. 42314000)
- 11.1: Pneumatic hose (Rezerves daļas Nr. 42319000)
- 11.2: Seal (Rezerves daļas Nr. 42310000)
- 11.3: Valve seat for GD2 (Rezerves daļas Nr. 42315000)
- 12: Wall brackets (Rezerves daļas Nr. 3855800M)*
- 13: Retro-fit set (Rezerves daļas Nr. 38796000)*
- 14: Set for noise protection (Rezerves daļas Nr. 37131000)*

* Izvēles aksesuāri