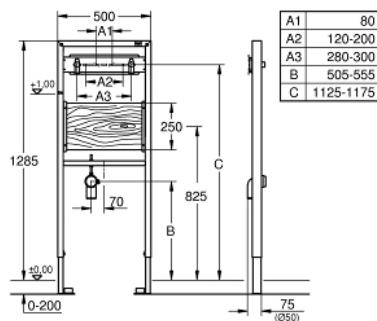


38 544 000 **RAPID SL ELEMENT FOR HOSPITAL WASTE SINK**



PRODUKTA APRAKSTS

- for wall mounted fittings
- 1.30 m installation height
- for on-the-wall installations or studded walls
- powder coated steel frame, self-supporting
- for dry-cladding, completely pre-assembled
- with fixed connections
- quick adjustment, lockable
- fixing material
- TÜV approved
- waterproof plywood
- HT-outlet bend Ø 50 mm
- 2 noise protected fitting connections ½"
- for on-the-wall installation please order wall brackets 38 558 00M (sold separately)



38 544 000 **RAPID SL ELEMENT FOR HOSPITAL WASTE SINK**

REZERVES DAĻAS, novembris 2008 – tagad

1: Fitting connection (Rezerves daļas Nr. 42944000)

2: Outlet elbow 2" (Rezerves daļas Nr. 42943000)

2.1: Holder for outlet elbow (Rezerves daļas Nr. 42236000)

3: Wall brackets (Rezerves daļas Nr. 3855800M)*

* Izvēles aksesuāri

