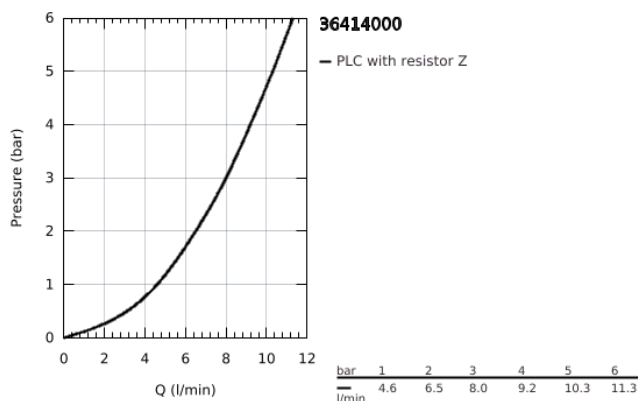
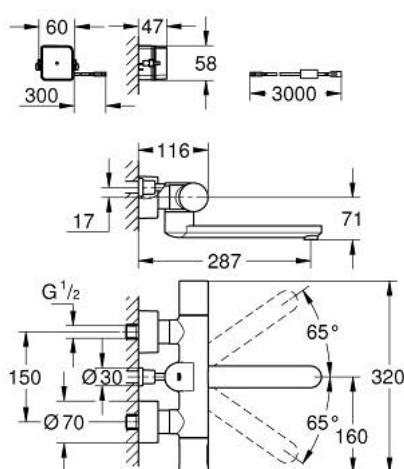


36 414 000 EUROSMART COSMOPOLITAN E BLUETOOTH INFRA-RED ELECTRONIC THERMOSTATIC BASIN MIXER, WALL MOUNTED



PRODUKTA APRAKSTS (1/2)

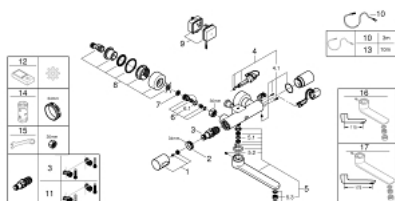
- Krāsa: chrome
- with infrared sensor and Bluetooth module for bi-directional communication for monitoring, configuration and service purpose
- with transformer 100-240 V AC, 50-60 Hz, 6.75 V DC
- GROHE Long-Life finish
- GROHE CoolTouch
- GROHE SafeStop at 38°C
- swivel cast spout 219 mm
- with swivel stop at 130° or fixed
- projection 287 mm
- laminar mousseur 9 l/min
- S-unions
- escutcheon covers for S unions
- non-return valve
- dirt strainers
- power connection cable 3.0 m
- for use with connection set
- 39 383 000
- with Bluetooth® 4.0* for wireless data communication
- for Apple** and Android devices
- Bluetooth range (max. 10 m) varies depending on used materials and walls between transmitter and receiver
- monitoring
- password protected products
- app detects all Bluetooth products in range
- auto flush cycles and timing last auto flush
- usage per day / 30 days
- thermal disinfection cycles and timings last disinfection
- configuration
- detection range and shut off delay
- auto flush
- thermal disinfection
- cleaning mode

36 414 000 EUROSMART COSMOPOLITAN E BLUETOOTH INFRA-RED ELECTRONIC THERMOSTATIC BASIN MIXER, WALL MOUNTED

PRODUKTA APRAKSTS (2/2)

- 2 on/off timers
- identification by name
- service
- send and save 3 profiles
- reset to factory or user settings
- hard and software version
- CE approved
- acoustic group I in accordance with DIN 4109
- type of protection faucet IP 59K
- Mobile devices and GROHE IR Remote App*** are not included in delivery and have to be ordered separately via an authorised Apple store/store/iTunes or Google Play store.
- * The Bluetooth® word mark and logos are registered trademarks owned by Bluetooth SIG, Inc. and any use of such marks by Grohe AG is under license. Other trademarks and trade names are those of their respective owners.
- ** Apple, the Apple logo, iPod, iPod Touch, iPhone and iTunes are trademarks of Apple Inc., registered in the U.S. and other countries. Apple is not responsible for the function of this device or its compliance with safety and regulatory standards.
- *** Available for free via iTunes app or Google Play store.

36 414 000 EUROSMART COSMOPOLITAN E BLUETOOTH INFRA-RED ELECTRONIC THERMOSTATIC BASIN MIXER, WALL MOUNTED



REZERVES DAĻAS, novembris 2019 – tagad

- 1: Temperature scale handle (Rezerves daļas Nr. 47811000)
- 2: Fitting ring (Rezerves daļas Nr. 47743000)
- 3: Thermostatic compact cartridge 1/2" (Rezerves daļas Nr. 47439000)
- 4: Solenoid valve (Rezerves daļas Nr. 42471000)
- 4.1: Set of screws (Rezerves daļas Nr. 42422000)
- 5: Spout (Rezerves daļas Nr. 42423000)
- 5.1: Sealing washer (Rezerves daļas Nr. 0128500M)
- 5.2: Set of screws (Rezerves daļas Nr. 46670000)
- 5.3: Laminar flow straightener (Rezerves daļas Nr. 13960000)
- 6: Non-return valve (Rezerves daļas Nr. 48277000)
- 6.1: O-ring $\varnothing 17 \times \varnothing 2$ (Rezerves daļas Nr. 0305500M)
- 7: Dirt strainer (Rezerves daļas Nr. 0726400M)
- 8: S-union (Rezerves daļas Nr. 12693000)
- 9: Switching power supply (Rezerves daļas Nr. 42470000)
- 10: Extension cable (Rezerves daļas Nr. 36221000)
- 11: GROHE TurboStat cartridge 1/2" (Rezerves daļas Nr. 47175000)*
- 12: Remote control (Rezerves daļas Nr. 36407001)*
- 13: Extension cable (Rezerves daļas Nr. 36222000)*
- 14: Socket spanner (Rezerves daļas Nr. 19332000)*
- 15: Special spanner (Rezerves daļas Nr. 19377000)*
- 16: Cast swivel spout (Rezerves daļas Nr. 13378000)*
- 17: Cast swivel spout (Rezerves daļas Nr. 13380000)*

* Izvēles aksesuāri