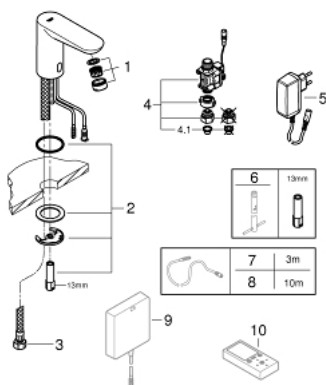


- Krāsa: chrome
- with infrared sensor for bi-directional communication for monitoring, configuration and service purpose
- for cold or premixed water
- with plug transformer 100-230 V AC, 50-60 Hz, 6 V DC
- GROHE Long-Life finish
- GROHE Water Saving - Less water, perfect flow
- maximum flow rate (at 3 bar): 5 l/min
- flexible connection hoses
- dirt strainers
- external solenoid valve
- rapid installation system
- 7 pre-set programs:
- auto flush
- thermal disinfection
- cleaning mode
- additional functions and precise settings by remote control 36 407
- CE approved
- acoustic group I in accordance with DIN 4109
- type of protection faucet IP 59K

36 269 000 EUROECO COSMOPOLITAN E INFRA-RED ELECTRONIC BASIN TAP 1/2" WITHOUT TEMPERATURE CONTROL



REZERVES DAĻAS, septembris 2015 – tagad

- 1: Mousseur (Rezerves daļas Nr. 48159000)
- 2: Shank mounting kit (Rezerves daļas Nr. 42389000)
- 3: Connection hose (Rezerves daļas Nr. 46255000)
- 4: Solenoid valve (Rezerves daļas Nr. 42390000)
- 4.1: Dirt strainer (Rezerves daļas Nr. 42395000)
- 5: Mains adaptor (Rezerves daļas Nr. 42388000)
- 6: Mounting wrench (Rezerves daļas Nr. 19017000)*
- 7: Power extension cable (Rezerves daļas Nr. 36340000)*
- 8: Power extension cable (Rezerves daļas Nr. 36341000)*
- 9: Switch-mode power supply (Rezerves daļas Nr. 36338000)*
- 10: Remote control (Rezerves daļas Nr. 36407001)*

* Izvēles aksesuāri