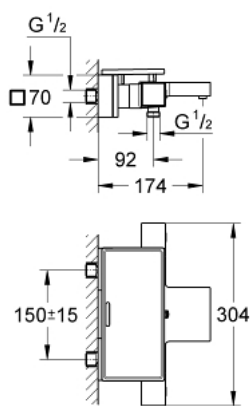


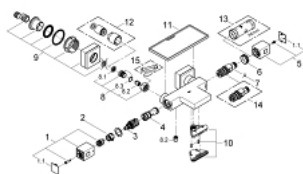
34 502 000 **GROHTHERM CUBE THERMOSTATIC BATH MIXER 1/2"**



PRODUKTA APRAKSTS

- Krāsa: chrome
- wall mounted
- GROHE Long-Life finish
- GROHE SafeStop at 38°C
- GROHE SafeStop Plus optional temperature limiter at 43°C included
- GROHE TurboStat compact cartridge with wax thermoelement
- integrated mixed water shut off
- GROHE AquaDimmer Eco with multiple function:
 - - integrated GROHE EcoButton (economy button with economy stop for shower)
 - - flow control
 - - diverter: bath/shower
- shower bottom outlet 1/2"
- GROHE XL Waterfall
- flow straightener
- built-in non return valves
- dirt strainers
- protected against backflow
- covered S-unions
- GROHE EasyReach shower tray (18 700 000)
- removable for easy cleaning
- da Vinci satin white finish
- GROHE Water Saving - Less water, perfect flow

34 502 000 GROHTHERM CUBE THERMOSTATIC BATH MIXER 1/2"



REZERVES DAĻAS, janvāris 2013 – tagad

- 1: Shut-off handle (Rezerves daļas Nr. 47960000)
- 1.1: Cover cap (Rezerves daļas Nr. 4795900M)
- 2: Stop ring (Rezerves daļas Nr. 47922000)
- 3: Aquadimmer (Rezerves daļas Nr. 47364000)
- 4: Water flow (Rezerves daļas Nr. 47887000)
- 5: Temperature control handle (Rezerves daļas Nr. 47958000)
- 5.1: Cover cap (Rezerves daļas Nr. 4795900M)
- 6: Fitting ring (Rezerves daļas Nr. 47743000)
- 7: Thermostatic compact cartridge 1/2" (Rezerves daļas Nr. 47439000)
- 8: Non-return valve (Rezerves daļas Nr. 47189000)
- 8.1: Dirt strainer (Rezerves daļas Nr. 0726400M)
- 8.2: Non-return valve (Rezerves daļas Nr. 08565000)
- 8.3: O-ring $\varnothing 17 \times \varnothing 2$ (Rezerves daļas Nr. 0305500M)
- 9: S-union (Rezerves daļas Nr. 47824000)
- 10: Water flow (Rezerves daļas Nr. 47924000)
- 11: GROHE EasyReach tray (Rezerves daļas Nr. 18700000)
- 12: Extension set, 30 mm (Rezerves daļas Nr. 46238000)*
- 13: Socket spanner (Rezerves daļas Nr. 19332000)*
- 14: GROHE TurboStat cartridge 1/2" (Rezerves daļas Nr. 47175000)*
- 15: Special spanner (Rezerves daļas Nr. 19377000)*

* Izvēles aksesuāri