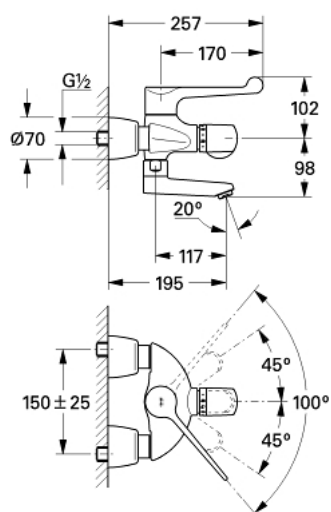


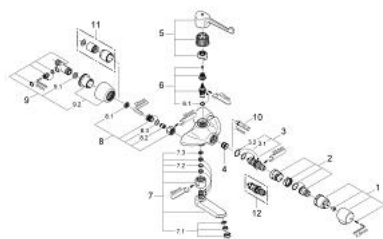
## 34 021 000 GROHTHERM ERGOMIX THERMOSTATIC BASIN MIXER 1/2"



### PRODUKTA APRAKSTS

- Krāsa: chrome
- for elbow lever actuation
- wall mounted
- metal lever 170 mm
- swivel area 100°
- metal stop
- ceramic headpart 1/2"
- wax thermoelement
- temperature scale handle with pre-adjustable safety stop between 35°C and 45°C
- arrangement to make the thermal disinfection easier
- swivel cast spout
- laminar flow straightener 9 l/min
- lockable stop ring
- built-in non return valves
- dirt strainers
- projection 195 mm
- covered S-unions
- lockable
- GROHE Long-Life finish

## 34 021 000 GROHTHERM ERGOMIX THERMOSTATIC BASIN MIXER 1/2"



### REZERVES DAĻAS, jūnijs 2007 – tagad

- 1: Temperature scale handle (Rezerves daļas Nr. 47409000)
- 2: Stop ring + regulating nut (Rezerves daļas Nr. 47278000)
- 3: Thermo-element 1/2" (Rezerves daļas Nr. 47450000)
- 3.1: Sealing washer Ø 21 x Ø 2 (Rezerves daļas Nr. 0599900M)
- 3.2: Sealing washer Ø 24 x Ø 2 (Rezerves daļas Nr. 0119600M)
- 4: Seat for thermostat (Rezerves daļas Nr. 01460000)
- 5: Lever 170 mm (Rezerves daļas Nr. 47414000)
- 6: Headpart 1/2" + lever handle (Rezerves daļas Nr. 47117000)
- 6.1: O-ring Ø 18.2 x Ø 1.7 (Rezerves daļas Nr. 0392400M)
- 7: Cast swivel spout (Rezerves daļas Nr. 13137000)
- 7.1: Laminar flow straightener (Rezerves daļas Nr. 13960000)
- 7.2: Sealing washer (Rezerves daļas Nr. 0128500M)
- 7.3: Stop limiter (Rezerves daļas Nr. 0974000M)
- 8: Non-return valve (Rezerves daļas Nr. 47189000)
- 8.1: Dirt strainer (Rezerves daļas Nr. 0726400M)
- 8.2: Non-return valve (Rezerves daļas Nr. 08565000)
- 8.3: O-ring Ø 17 x Ø 2 (Rezerves daļas Nr. 0305500M)
- 9: S-union, lockable (Rezerves daļas Nr. 12051000)
- 9.1: Seal (Rezerves daļas Nr. 0138600M)
- 9.2: Escutcheon (Rezerves daļas Nr. 45392000)
- 10: Socket spanner (Rezerves daļas Nr. 19070000)\*
- 11: Extension set, 30 mm (Rezerves daļas Nr. 46238000)\*
- 12: Thermo-element 1/2" for changed waterways (Rezerves daļas Nr. 47282000)\*

\* Izvēles aksesuāri