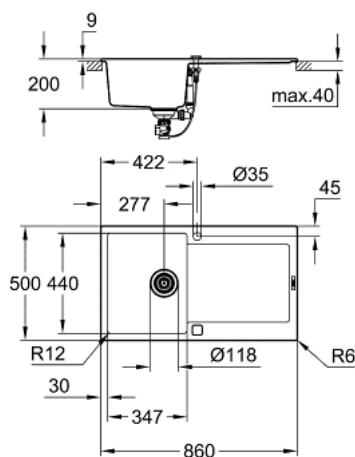


31 644 AT0 K500 COMPOSITE SINK WITH DRAINER



PRODUKTA APRAKSTS

- Krāsa: granite gray
- model: K500 50-C 86/50 1.0 rev
- mounting type: top mount
- material: quartz composite
- GROHE Whisper
- min. cabinet size: 500 mm
- dimensions: 860 x 500 mm
- 1 bowl: 347 x 440 x 200 mm
- outer radius: R6, inner bowl radius: R12
- GROHE FastFixation installation system
- sink mountable left or right
- cut-out: 840 x 480 mm
- drainer: automatic waste fitting
- accessories included: automatic waste fitting with rotary handle, waste kit, basket strainer waste, mounting set
- optional push to open excenter (40 986 SD0)
- amount of fasteners included (top mount): 12
- heat resistant up to 180° C

31 644 AT0 **K500 COMPOSITE SINK WITH DRAINER**

REZERVES DAĻAS, jūlijs 2018 – tagad

1: Plug (Rezerves daļas Nr. 42588SD0)

2: Turning handle (Rezerves daļas Nr. 42586SD0)

