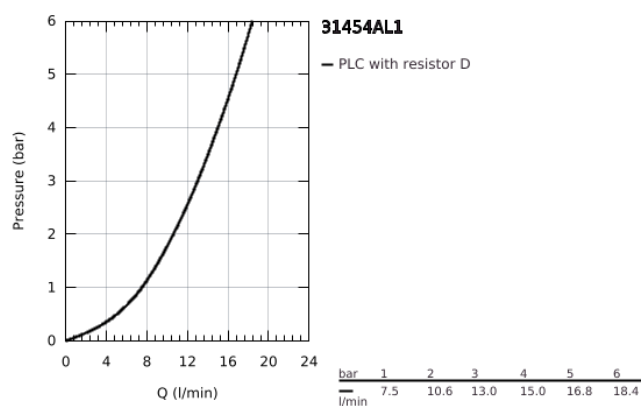
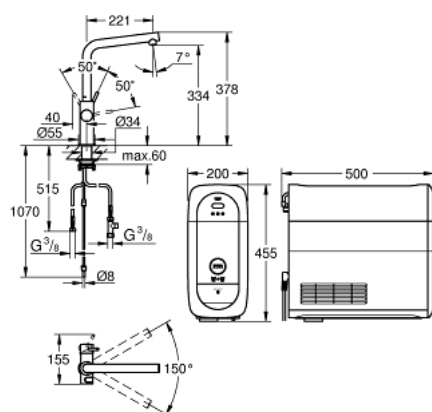


## 31 454 AL1 GROHE BLUE HOME L-SPOUT STARTER KIT



## PRODUKTA APRAKSTS (1/2)

- Krāsa: brushed hard graphite
- consisting of:
  - GROHE Blue Home single-lever sink mixer with filter function
  - single hole installation
  - L-spout
  - push buttons for 3 types of filtered and chilled table water
  - still, medium, sparkling
  - GROHE Long-Life finish
  - GROHE SilkMove 28 mm ceramic cartridge
  - swivel tubular spout
  - swivel area 150°
  - separate inner water ways for filtered and non-filtered water
  - flexible connection hoses
  - GROHE Blue Home cooler
  - delivers 3 liters of chilled water per hour
  - 180 Watt cooling unit, 230 V, 50 Hz
  - sound level in standby 44 dB(A)
  - type of protection IP 21
  - CE approved
  - requires ventilation holes in the bottom of the kitchen cabinet
  - software set-up and monitoring of filter and CO<sub>2</sub> capacity possible via GROHE Watersystems app
  - push notifications at low filter resp. CO<sub>2</sub> capacity
  - with Bluetooth® 4.0\* and WIFI interface for wireless data communication
  - for Apple\*\* and Android devices
  - Bluetooth range (max. 10 m) varies depending on used materials and walls between transmitter and receiver
  - GROHE Blue filter S-Size and filter head with flexible water hardness adjustment for regions with water hardness of more than 9° dKH
  - for regions with water hardness below 9° dKH please order activated carbon filter 40 547 001

## 31 454 AL1 GROHE BLUE HOME L-SPOUT STARTER KIT

### PRODUKTA APRAKSTS (2/2)

- compatible with GROHE Blue filter S-Size, M-Size, GROHE Blue activated carbon filter, GROHE Blue Ultrasafe filter and GROHE Blue magnesium+ filter
- GROHE Blue 425 g CO<sub>2</sub> bottle
- System requirements Apple iPhone with iOS 14.0 or higher System requirements Android smart phone with Android 10.0 or higher Mobile devices and GROHE Watersystems App\*\*\* are not included in delivery and have to be ordered separately via an authorised Apple store/store/iTunes or Google Play store.\* The Bluetooth word mark and logos are registered trademarks owned by Bluetooth SIG, Inc. and any use of such marks by Grohe AG is under license. Other trademarks and trade names are those of their respective owners.\*\* Apple, the Apple logo, iPod, iPod Touch, iPhone and iTunes are trademarks of Apple Inc., registered in the U.S. and other countries. Apple is not responsible for the function of this device or its compliance with safety and regulatory standards.\*\*\* Available for free via iTunes app or Google Play store.
- This product includes an article which is declared as a hazardous substance. Find more information in the safety data sheet. You can download the safety data at: [www.grohe.com/safety-data-sheets/](http://www.grohe.com/safety-data-sheets/)

## 31 454 AL1 GROHE BLUE HOME L-SPOUT STARTER KIT



### REZERVES DAĻAS, oktobris 2021 – tagad

- 1: Fitting ring (Rezerves daļas Nr. 07419000)
- 2: Cap (Rezerves daļas Nr. 46581AL0)
- 3: Lever (Rezerves daļas Nr. 46957AL0)
- 4: Cartridge (Rezerves daļas Nr. 46580000)
- 5: Mousseur GROHE Blue L spout (Rezerves daļas Nr. 48194AL0)
- 6: Operating unit (Rezerves daļas Nr. 46958AL0)
- 7: Dirt strainer (Rezerves daļas Nr. 47576000)
- 8: Shank fastening assembly (Rezerves daļas Nr. 48384000)
- 9: Support plate (Rezerves daļas Nr. 05334000)
- 10: Cooler (Rezerves daļas Nr. 40711001)
- 11: Filter head (Rezerves daļas Nr. 48344000)
- 12: Filter S-Size (Rezerves daļas Nr. 40404001)
- 13: Starter kit 425 g CO<sub>2</sub> bottles (4 pieces) (Rezerves daļas Nr. 40422000)
- 14: Glass carafe (Rezerves daļas Nr. 40405000)\*
- 15: Filter M-Size (Rezerves daļas Nr. 40430001)\*
- 16: Activated carbon filter (Rezerves daļas Nr. 40547001)\*
- 17: UltraSafe filter (Rezerves daļas Nr. 40575001)\*
- 18: Magnesium+ filter (Rezerves daļas Nr. 40691001)\*
- 19: Cleaning cartridge (Rezerves daļas Nr. 40434001)\*
- 20: Cleaning cartridge adapter (Rezerves daļas Nr. 40694000)\*
- 21: Extension set (Rezerves daļas Nr. 40843000)\*

\* Izvēles aksesuāri