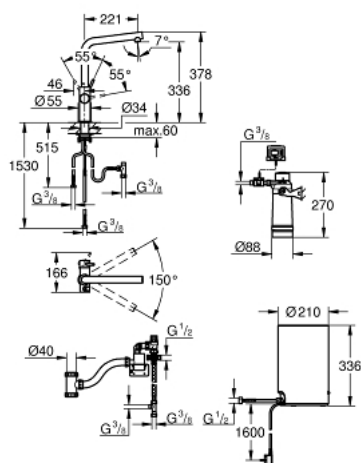


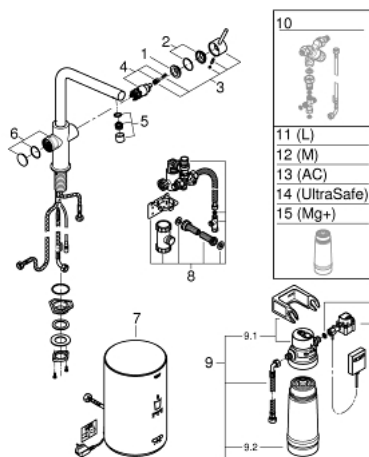
30 327 001 GROHE RED DUO FAUCET AND M SIZE BOILER



PRODUKTA APRAKSTS

- Krāsa: chrome
- consisting of:
 - GROHE Red Duo single-lever sink mixer
 - single hole installation
 - L-spout
 - GROHE ChildLock push buttons for boiling water
 - TÜV certified triple electronic safeguards against accidental activation of boiling water
 - GROHE Long-Life finish
 - GROHE SilkMove 28 mm ceramic cartridge
 - insulated tubular spout
 - swivel area 150°
 - separate water ways
 - flexible connection hoses
 - connection for GROHE Red boiler
 - GROHE Red boiler M size
 - reservoir for boiling and hot water
 - 3 liter 100° C boiling water
 - 4 liter total capacity
 - required inlet pressure: 1-7 bar
 - with flexible connection hose and outlet for boiling water
 - CE approved
 - power supply 230 V 50 Hz
 - power consumption 2100 W
 - standby power consumption 15 W
 - energy efficiency class A
 - GROHE Blue S-Size filter starter set
 - for protection of the boiler from limescale
 - Capacity 600 L at 20° dKH
 - flow rate measuring unit

30 327 001 GROHE RED DUO FAUCET AND M SIZE BOILER



REZERVES DAĻAS, septembris 2016 – tagad

- 1: Fitting ring (Rezerves daļas Nr. 07419000)
- 2: Cap (Rezerves daļas Nr. 46581000)
- 3: Lever (Rezerves daļas Nr. 46957000)
- 4: Cartridge (Rezerves daļas Nr. 46580000)
- 5: Mousseur (Rezerves daļas Nr. 13999000)
- 6: Operating unit (Rezerves daļas Nr. 46997000)
- 7: Boiler Size M (Rezerves daļas Nr. 40830001)
- 8: Safety group (Rezerves daļas Nr. 48371000)
- 9: S-size filter starter set (Rezerves daļas Nr. 40438001)
- 9.1: Filter head (Rezerves daļas Nr. 64508001)
- 9.2: Filter S-Size (Rezerves daļas Nr. 40404001)
- 10: External mixing valve for GROHE Red (Rezerves daļas Nr. 40841001)*
- 11: Filter L-Size (Rezerves daļas Nr. 40412001)*
- 12: Filter M-Size (Rezerves daļas Nr. 40430001)*
- 13: Activated carbon filter (Rezerves daļas Nr. 40547001)*
- 14: UltraSafe filter (Rezerves daļas Nr. 40575001)*
- 15: Magnesium+ filter (Rezerves daļas Nr. 40691001)*

* Izvēles aksesuāri