

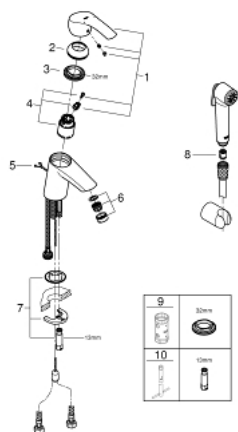
Technical drawing of a kitchen faucet and shower head. The faucet is a single-lever design with a chrome finish. The shower head is a handheld type with a chrome finish and a spray nozzle. The drawing includes a perspective view of the faucet, a side view of the shower head, and a detailed cross-section of the faucet assembly with dimensions.

Dimensions (mm):

- Overall height: 184
- Height to spout: 146
- Spout diameter:  $\varnothing 50$
- Spout angle:  $30^\circ$
- Height to handle: 61
- Handle diameter:  $\varnothing 34$
- Max. handle height: max. 30
- Overall height to base: 370
- Height to base: 104
- Base diameter:  $G \frac{3}{8}$
- Side view height: 1500
- Side view width: 46
- Angle:  $55^\circ$
- Angle:  $55^\circ$

- Krāsa: chrome
- single hole installation
- metal lever
- GROHE SilkMove 35 mm ceramic cartridge
- adjustable flow rate limiter
- with temperature limiter
- GROHE Long-Life finish
- GROHE Water Saving - Less water, perfect flow
- maximum flow rate (at 3 bar): 5 l/min
- GROHE FastFixation installation system
- retractable chain
- flexible connection hoses
- with shower set consisting of
- hand shower with integrated diverter
- wall shower holder
- shower hose

## 23 124 002 EUROSMART SINGLE-LEVER BASIN MIXER 1/2" S-SIZE



### REZERVES DAĻAS, marts 2018 – tagad

- 1: Lever (Rezerves daļas Nr. 46897000)
- 2: Cap (Rezerves daļas Nr. 46492000)
- 3: Screw coupling (Rezerves daļas Nr. 46460000)
- 4: Cartridge (Rezerves daļas Nr. 46374000)
- 5: Chain (Rezerves daļas Nr. 06815000)
- 6: Mousseur (Rezerves daļas Nr. 48280000)
- 7: Shank mounting kit (Rezerves daļas Nr. 46671000)
- 8: Non-return valve (Rezerves daļas Nr. 08565000)
- 9: Socket spanner (Rezerves daļas Nr. 19332000)\*
- 10: Mounting wrench (Rezerves daļas Nr. 19017000)\*

\* Izvēles aksesuāri