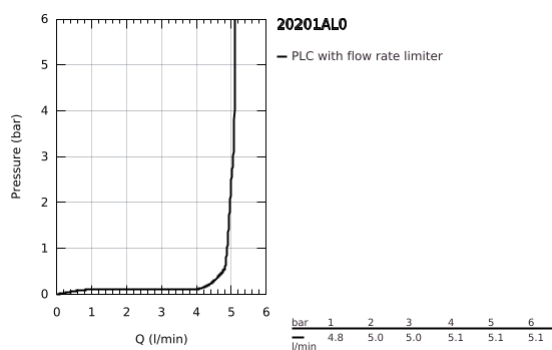
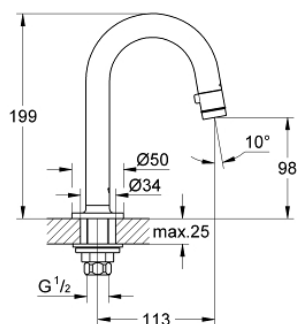


20 201 AL0 UNIVERSAL PILLAR TAP 1/2"



PRODUKTA APRAKSTS

- Krāsa: brushed hard graphite
- C-spout
- flow-stop mousseur
- ceramic disk headpart
- union nut 1/2"
- with 10.5 mm drilling
- GROHE Long-Life finish
- GROHE Water Saving - Less water, perfect flow
- maximum flow rate (at 3 bar): 5 l/min
- projection 113 mm



20 201 AL0 UNIVERSAL PILLAR TAP 1/2"



REZERVES DAĻAS, oktobris 2019 – tagad

- 1: Handle (Rezerves daļas Nr. 48041AL0)
- 2: Headpart (Rezerves daļas Nr. 48042000)
- 3: Shank mounting kit (Rezerves daļas Nr. 45004000)
- 4: Coupling nut 1/2" x 14.5 mm (Rezerves daļas Nr. 1290200M)
- 4.1: Fibre seal Ø 18,5 x Ø 12 x 2 (Rezerves daļas Nr. 0138900M)
- 5: Coupling nut 1/2" (Rezerves daļas Nr. 1290100M)
- 5.1: Fibre seal Ø 18,5 x Ø 12 x 2 (Rezerves daļas Nr. 0138900M)